

Erratum

CEREAL CHEMISTRY, Vol. 79, No. 6, November-December 2002

Single Kernel Sampling Method for Maize Starch Analysis While Maintaining Kernel Vitality

Yuan Yao, Mark J. Guiltinan, Jack C. Shannon, Donald B. Thompson

Cereal Chem. 79(6):757-762

The following figure was incorrect in the printed article. The corrected figure is presented here. Please note the chromatogram for *du* starches.

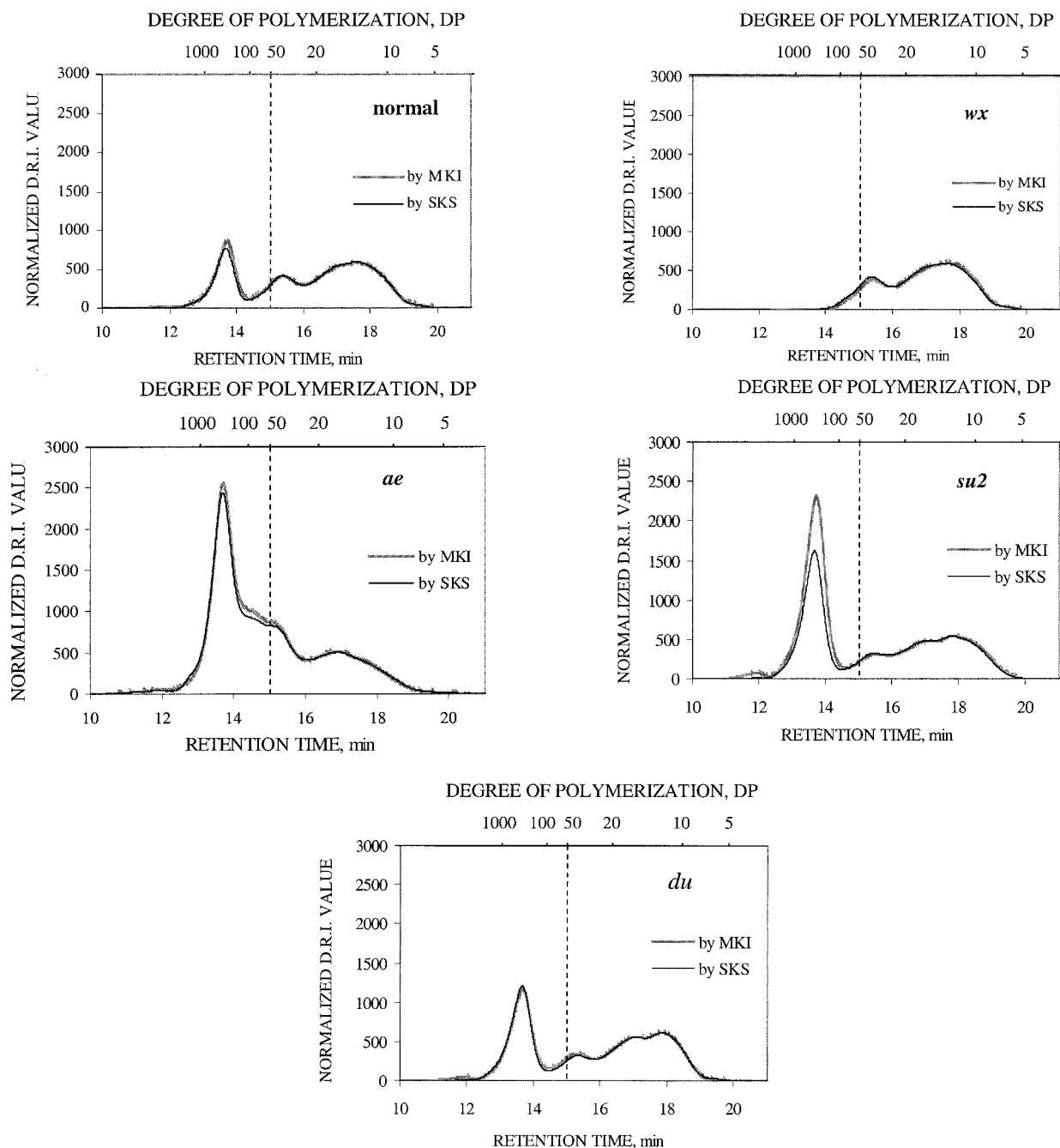


Fig. 1 High-performance size-exclusion chromatography (HPSEC) of debranched starches isolated by standard multikernel isolation (MKI) and single kernel sampling (SKS) from normal, *ae*, *wx*, *su2*, and *du* starches. Chromatograms were normalized to give equal total chromatogram areas for the region DP \leq 50.